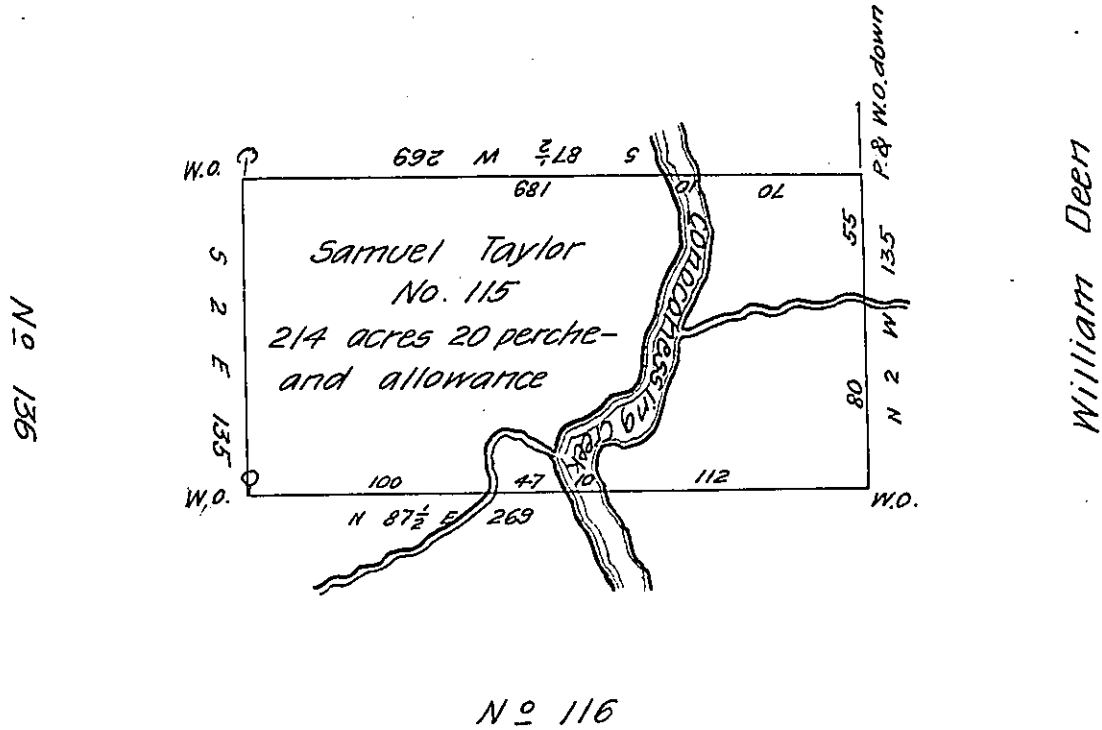


FORM NO 1.



Mercer County



The above draft represents a survey made for Samuel Taylor on his actual settlement March 2nd 1836 Situate in Shenango Township 1st district of donation Land No 115 bounded by Mercer County line on the North, No 136 on the West, No 116 on the South and William Deen on the East Including a large and ancient improvement say sixty or eighty acres clear and cultivated Land with a message fit for the habitation of man; containing two hundred & fourteen acres and twenty perches and allowance of six pr. Ct. for roads &c.

March 12th 1836 a copy from the survey } John Martin D.S.
& draft Book in my office }

Jacob Spangler Esquire

S. Genl

IN TESTIMONY that the above is a copy of the original remaining on file in the Department of Internal Affairs of Pennsylvania, made conformably to an Act of Assembly approved the 16th day of February, 1833, I have hereunto set my Hand and caused the Seal of said Department to be affixed at Harrisburg, this seventeenth day of September 1907

Henry Howell
Secretary of Internal Affairs.